

# VGM 410

## High Strength Castings

Readymade grout, achieving very high strength in short time, final strength approx. 90 MPa



### Main Properties and Adjustment:

- Fixating heavy machinery, anchoring cranes and conveyors, railways, casting foundations for machines, filling gaps, cavities and intervals between concrete and metals and between concrete and concrete, leveling and anchoring metal plates, etc.
- Reaching flexural strength of 10 MPa and compressive strength of approx. 90 MPa (after 28 days).
- Does not shrink, excellent adhesion capability to concrete and steel.
- Easy to apply with a pumping machine.
- Controlled volume increase (0.3%-0.5%) assuring good filling of casting.
- No chloride, stable mixture does not disintegrate.
- Intended for the filling gap openings of 20-70 mm. aggregate size 0.5-2.5 mm



**Packaging:** 25 Kg. paper bags

**Consumption:** 1 bag of 25 kg produces a mixture in volume of approx. 13 liter.

**Composition:** grout based on special cement and chemical additives

### Technical Data:

Mechanical properties in 20°C in Laboratory conditions

Time	Flexural strength MPa	Compressive strength MPa
18 hours	Approx. 7	Approx. 28
24 hours	Approx. 7.7	Approx. 58
3 days	Approx. 8.3	Approx. 63
7 days	Approx. 8.6	Approx. 67
28 days	Approx. 10.1	Approx. 90

### Application:

- Clean substrate from parts of concrete and oils.
- Substrate should be brushed with water approx. 6 hours prior to application, ensuring that the substrate is moist but not wet.
- Pour 3.5 liters of water and slowly add the entire 25 Kg. contents of the bag, while mixing in a mixer to obtain a unified mixture. Wait for 3 minutes and mix again until reaching the appropriate workability (up to 5 liter). Water quantities could vary, despite the stated above, due to changes of weather, etc. In any event, the appropriate workability level ought to be achieved.

## High Strength Castings

- Grout quantity should be prepared in order to allow continuous application without interruption. The mixture should be applied from one side of the mold, in order to allow air emission from the other side of the mold.
- The fresh mixture should be protected in order to avoid quick drying by covering with wet jute sacks and polyethylene for at least 48 hours.
- Curing in water should be carried out after hardening of the cast for 3 days, 3 times a day.

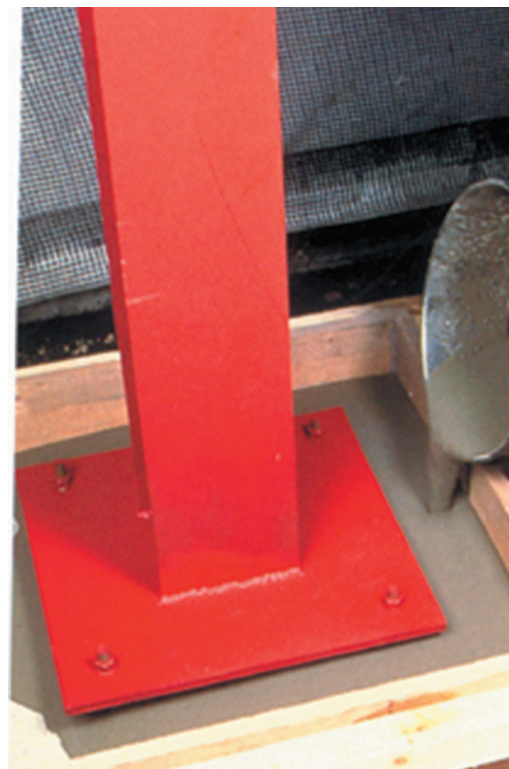
### Precautions:

- Surplus water will detract from the final strength of the grout.
- Do not cast above the height of the base of the machine.
- The casting molds ought to be completely sealed.
- It is compulsory to execute expansion joints according to the instructions of the planner • Should not be applied in temperatures under 5°C or above 35°C.
- Do not add water to a drying mix

**Cleaning:** Tools and hands should be cleaned with running water, for as long as the material is fresh.

**Storage:** In its original package in a shaded and dry location.

**Shelf Life:** Up to 9 months from the production date



The Technical Service Department is available to our customers for consultation and guidance. The materials marketed by us are made of the finest components and are under close quality control. However, liability for the adjustment of the material to its use is imposed on the user only. We recommend in any event testing the adjustment of the material to the sought application prior to its use